



California Commissioning Collaborative

Poudre School District-Fort Collins, CO Lessons Learned (so far)

Presented by:

Stu Reeve

Energy Manager

Poudre School District

February 16, 2012



PSD Lessons Learned

- New Construction Lessons Learned 2000-2008
- Existing Schools and Major Infrastructure Replacements
- Goals and Strategies
- How Building Envelope Studies Impact Design
- BECx Implementation

Kinard MS

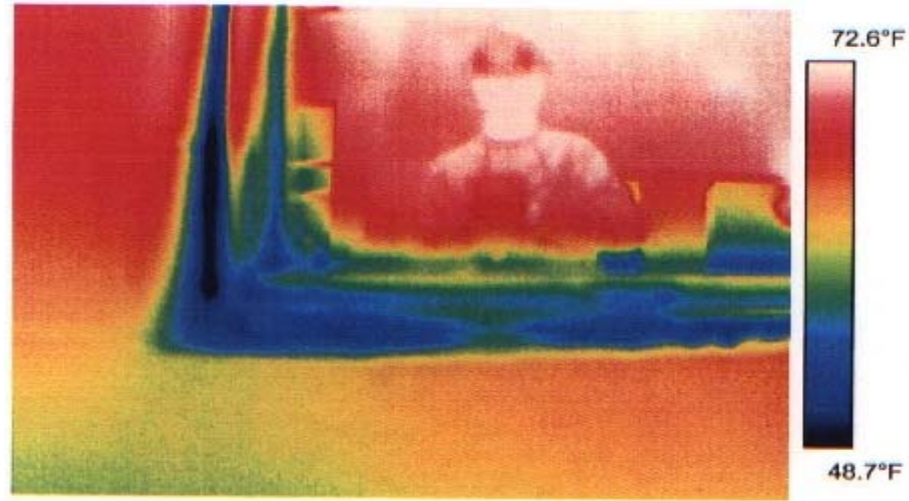
Architect: RBB Architects

Photographer: Fred Fuhrmeister



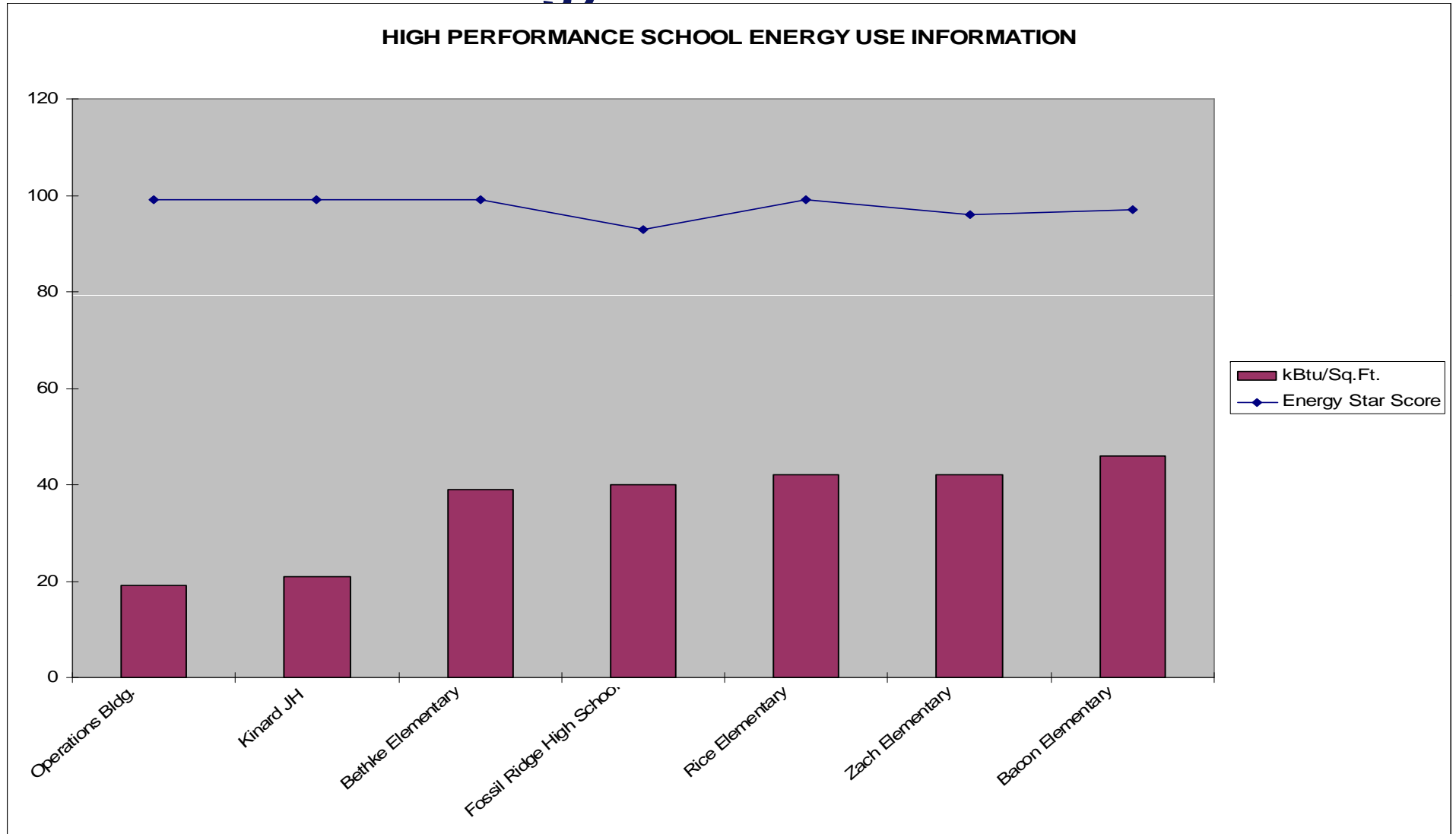


3" Sprayed-On Polyurethane Insulation

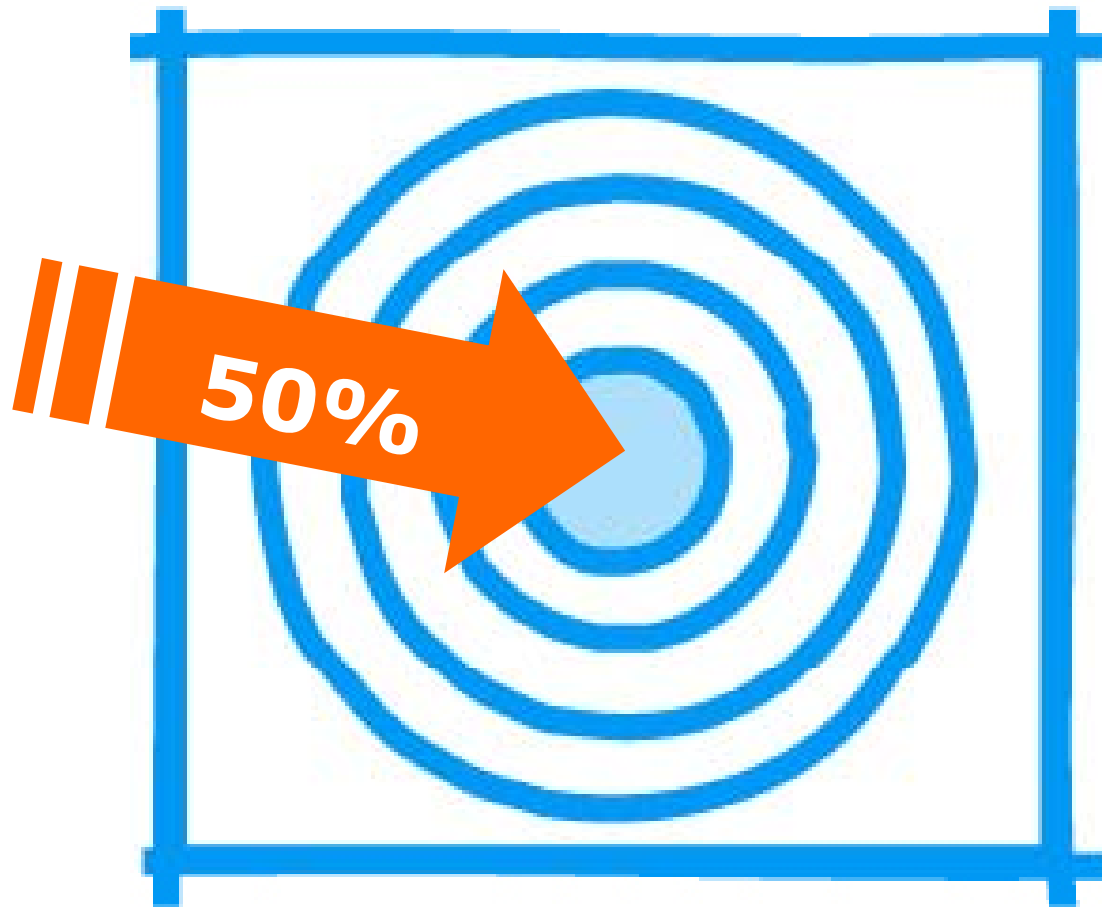


Lesson Learned With IR Testing

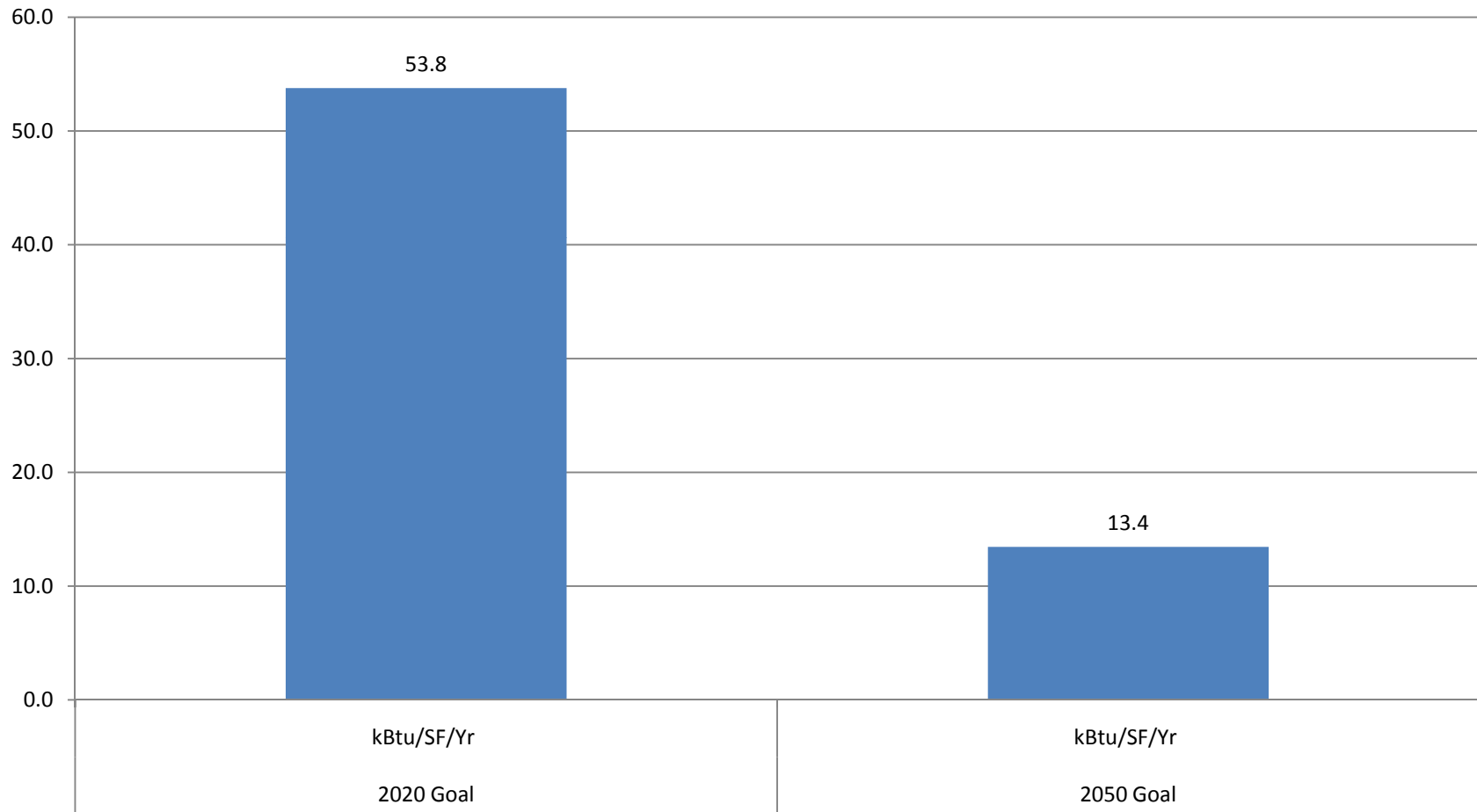
PSD Energy Performance to Date



Setting Energy Goals



PSD 2010 Bond Energy Goals



Building Envelope Studies

Poudre School District 2011 Testing

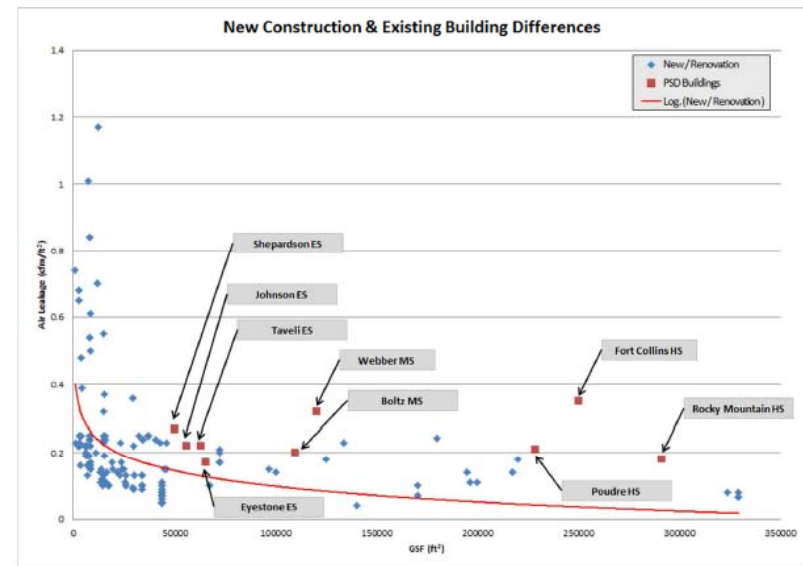


www.pieforensic.com

pie FORENSIC CONSULTANTS

©November 2011

PSD 2011 Air Leakage Testing Results



RCx and Life Cycle Cost Analysis

Retro-Commissioning Study Report
Poudre School District
Poudre High School
September 8, 2011



Energy Analysis and ASHRAE 90.1 Baseline Energy Modeling

POUDRE
HIGH SCHOOL
ENERGY ANALYSIS

Energy
Analysis
Report



09/15/2011

Fort Collins, CO



This report has been prepared to present the energy analysis results of the Poudre High School. It contains a listing of recommended energy conservation measures and the energy savings and economic evaluation of these measures.

Design Tools and Goals

- Impact of Providing the Right Tools to Challenge Conventional Design
- Building Envelope Studies and Impact on Energy Modeling
- Design Team Confidence to “Right Size” Mechanical Systems
- Reinforcing Goals Throughout the Design Process
- Final Design Energy Modeling
- Rebates and Incentives for High Performance Design
- We’ll Keep You Posted 😊

“Got to Be Blue to Be Green”



Eating your energy efficiency vegetables before enjoying your renewable energy dessert”

Thank you 😊

Stu Reeve, CEM
Energy Manager
Poudre School District
Fort Collins, CO
970-490-3502
stur@psdschools.org

